

## DESCRIPTION

The RVB Series vacuum breaker features a floating disc that lifts and seals to allow full flow of liquids, oil, water, chemicals, etc. and breaks the seal to permit atmospheric pressure to enter when the flow stops. This prevents unwanted back siphonage and contamination from getting back into the pipeline system.

The inlet and outlet ports are parallel and have two cut-out slots on the base. The valve can be used on most chemical, wet processing stations, plating equipment, chemical processing, and water treatment applications.

**Note:** The RVB valves must be mounted horizontally.

## R-K RVB SERIES VACUUM BREAKER



## KEY FEATURES

- It uses a floating disc that seals to allow for full liquid flow.
- The disc breaks the seal to allow atmospheric pressure to enter when the flow stops, which prevents back siphonage and contamination.
- The inlet and outlet ports are parallel, and the base has two cut-out slots for easy mounting.
- The valve is suitable for most chemicals, wet processing, plating, and water treatment applications.
- Important note: The valves must be mounted horizontally.

## VALVE BODY MATERIALS:

- PVC Type 1, Grade 1
- Polypropylene
- PVDF

### Seal Options

- EPDM,
- VITON,
- KALREZ

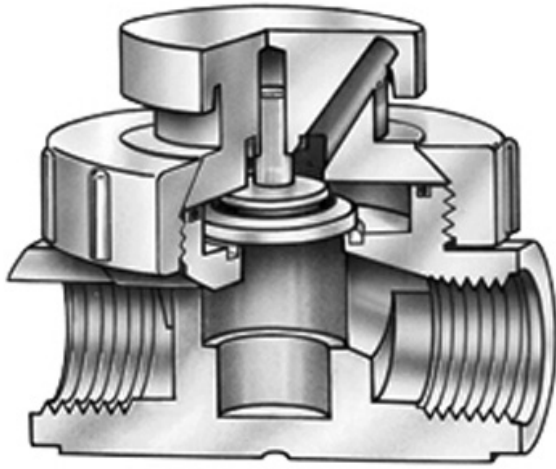
## SIZES

**Valve Sizes:** ¼", ½", ¾", 1", 1½", 2"

### Port Types:

½" to 1" Valve FNPT,  
1.5" to 2" Valve MPT  
(all fully ported).

**Mounting:** (2) cut-out slots on molded valve body (½" to 1")



## PRESSURE & TEMPERATURE RATINGS:

**Pressure Range:**  
0 to 150 PSIG

**Temperature Range**

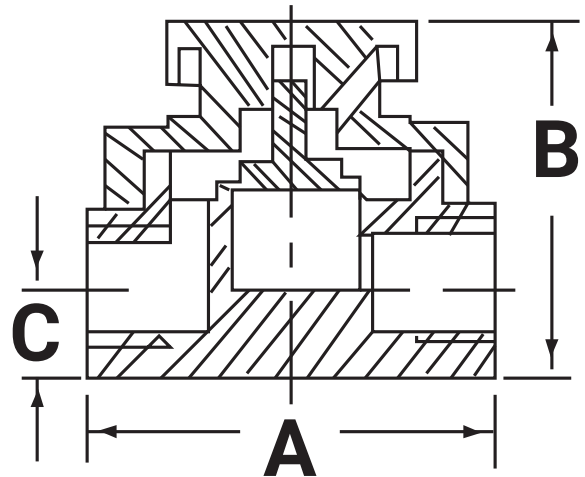
- 0 to 140°F for PVC
- 0 to 180°F for POLYPRO
- 0 to 280°F for PVDF
- 0 to 340°F for TEFLON

## ENGINEERING & PERFORMANCE DATA

### DIMENSIONAL DATA

( ) negative value

Size	A	B	C
1/2	(2.9)	(2.5)	(0.7)
3/4	(3.3)	(3.05)	(0.8)
1	(3.9)	(3.82)	(0.9)
1.5	5	5.47	1.5
2	6	6.16	1.7



The chart below will specify R - K standard valves regarding valve size, valve material, and seal material.  
For special orders, please consult the factory for pricing and delivery information.

### RVB - X X X - XX

#### VALVE SIZE

50 = 1/2"  
75 = 3/4"  
100 = 1.0"  
150 = 1.5"  
200 = 2.0"

#### MATERIAL

1 = PVC  
2 = POLYPRO  
3 = PVDF  
5 = Other (Please specify)

#### SEALS

E = EPDM  
V = VITON  
K = KALREZ  
O = Other (Please specify)

X = MOLDED BODY  
1/2", 3/4", 1" only